

# KIELDER WATERSIDE

  
RETREAT TO ADVENTURE

## **Access statement - Games Room**

Location 330m from the Visitor Centre.

The route up from the Visitor Centre has a firm tarmac surface with some steep sections with gradients of 1 in 10.

The route is shared with vehicles.

The approach to the entrance is approx. 1 in 17.

The entrance is covered.

Twin leaf doors give 710mm clear opening width through one leaf, the threshold is raised 75mm.

Games provided include table tennis, pool

A mix of seating is available in the games room.

# KIELDER WATERSIDE

RETREAT TO ADVENTURE



1. Route up from visitor centre



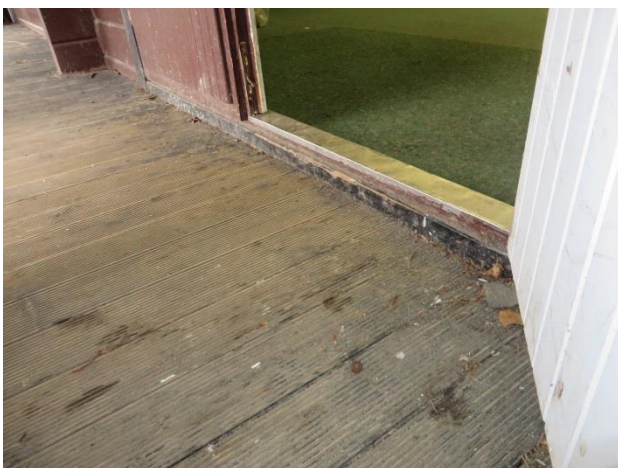
2. Route up from visitor centre



3. Approach to games room 1 in 17.



4. Covered Entrance.



5. Raised threshold.



6. Internal space and

# KIELDER WATERSIDE

RETREAT TO ADVENTURE



7. Internal spaces.



8. .Activities and seating.