

KIELDER WATERSIDE

RETREAT TO ADVENTURE

Access Statement - Changing rooms

The changing rooms are accessed from the Visitor Centre Reception.

The clear opening width of the door into the corridor from reception is 850mm.

The opening force for the corridor door is low.

The width of the corridor leading to the changing room is approx. 1470mm.

The clear opening width of the door into the changing rooms is 850mm.

The opening force for the door into the changing rooms is low.

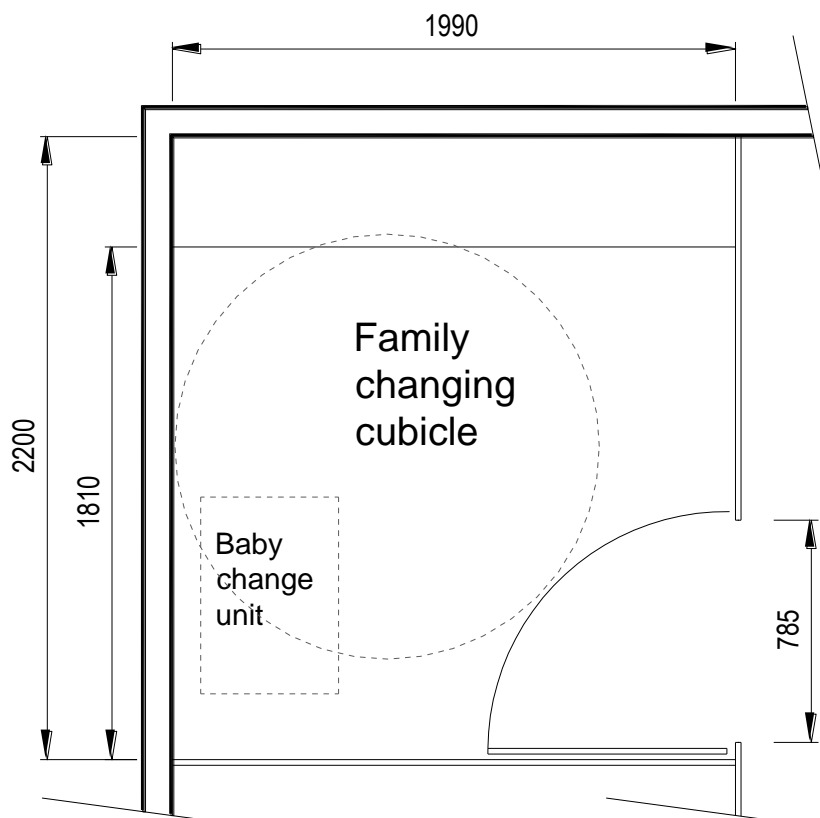
An accessible WC/shower room is provided.

Individual showers are provided door clear opening width is 590mm, shower trays are raised approx. 150mm.

2 toilets are provided.

2 small changing cubicles and 1 larger family cubicle with a folding baby change unit at 740mm above floor level are provided. Benches in cubicles are 430mm above floor level. Clear opening width of doors to small cubicles is 590mm and to family changing cubicle is 785mm.

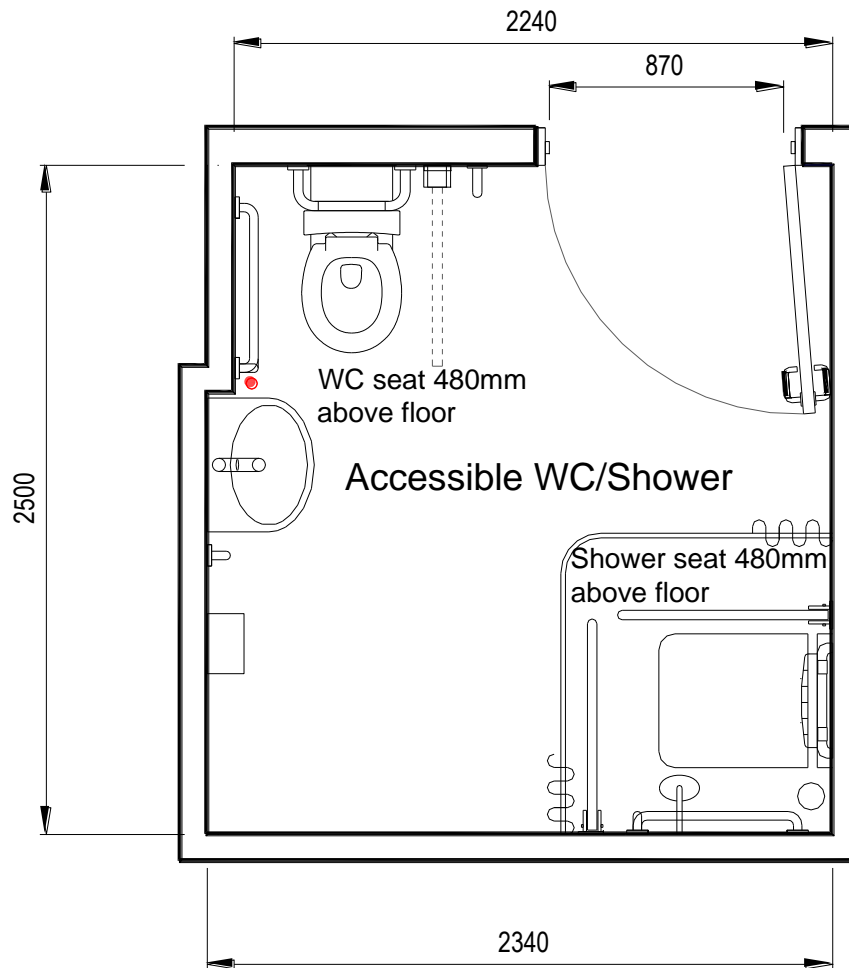
Lockers are 610mm and 1220mm above floor level with keypad locks.



KIELDER WATERSIDE



RETREAT TO ADVENTURE



KIELDER WATERSIDE

RETREAT TO ADVENTURE



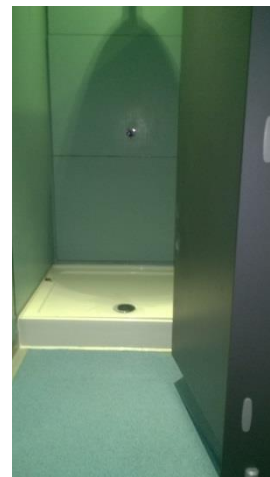
1. Accessible WC/shower room.



2. . Accessible WC/shower room.



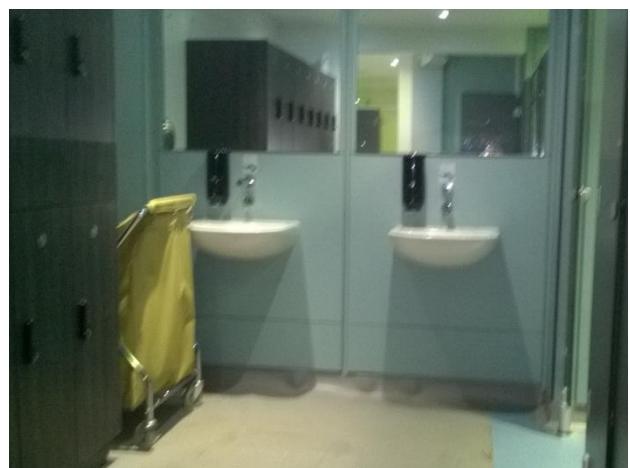
3. Changing cubicles.



4. Individual shower.



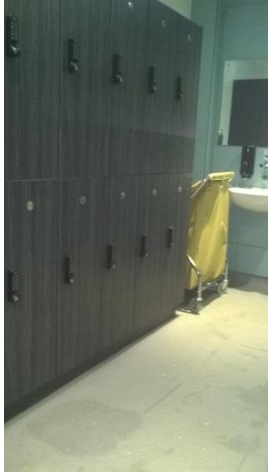
5. Toilets.



6. Washbasins with sensor taps.

KIELDER WATERSIDE

RETREAT TO ADVENTURE



7. Lockers.